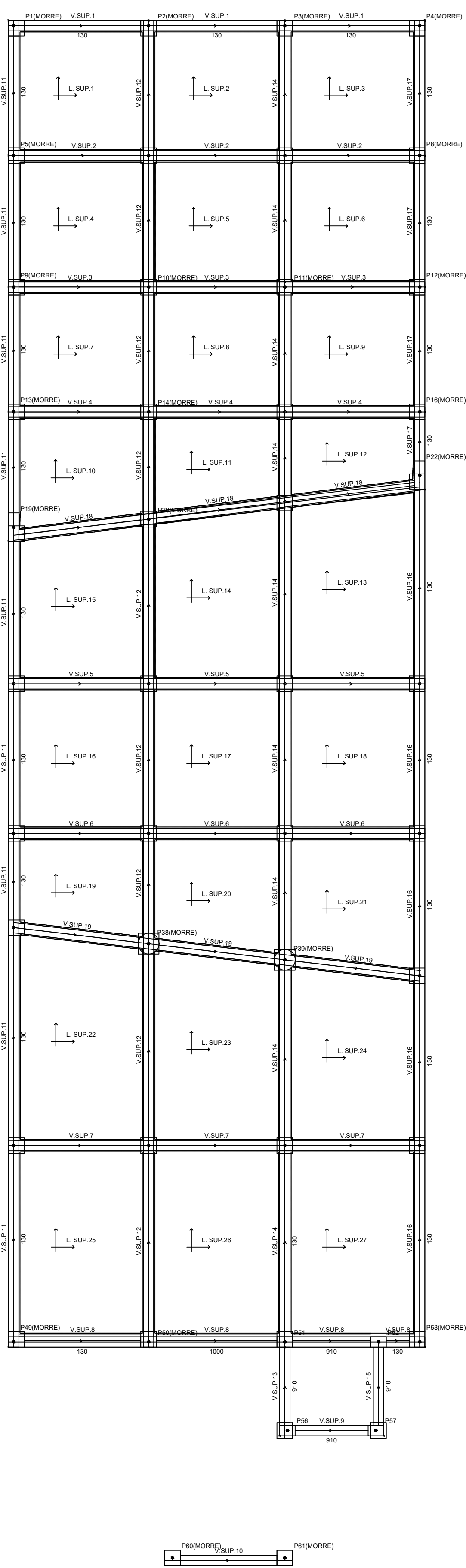
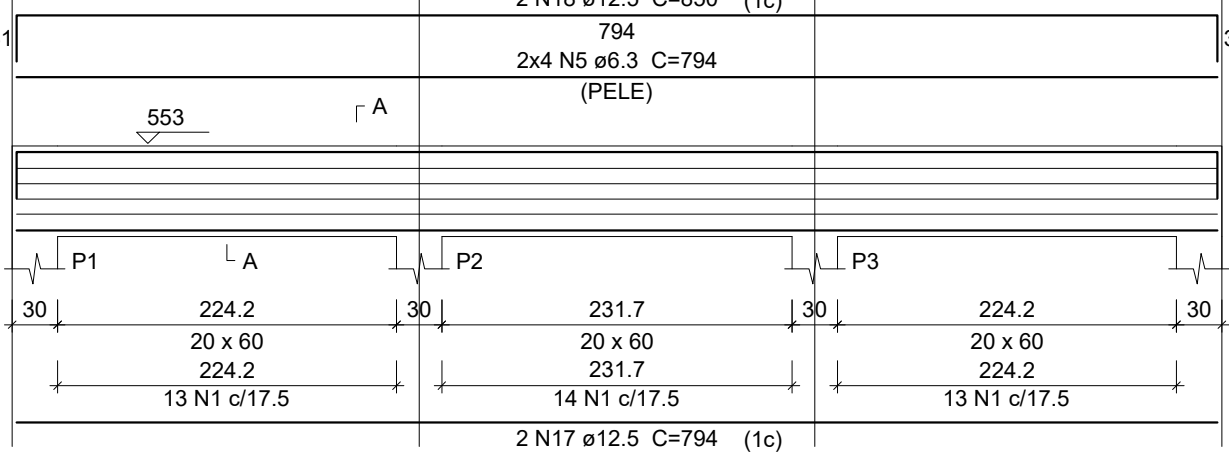


PLANTA VIGAS
SUPERIORES



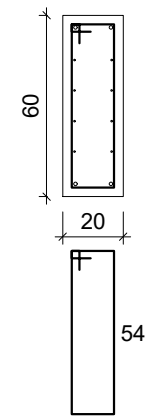
V.SUP.1

ESC 1:50



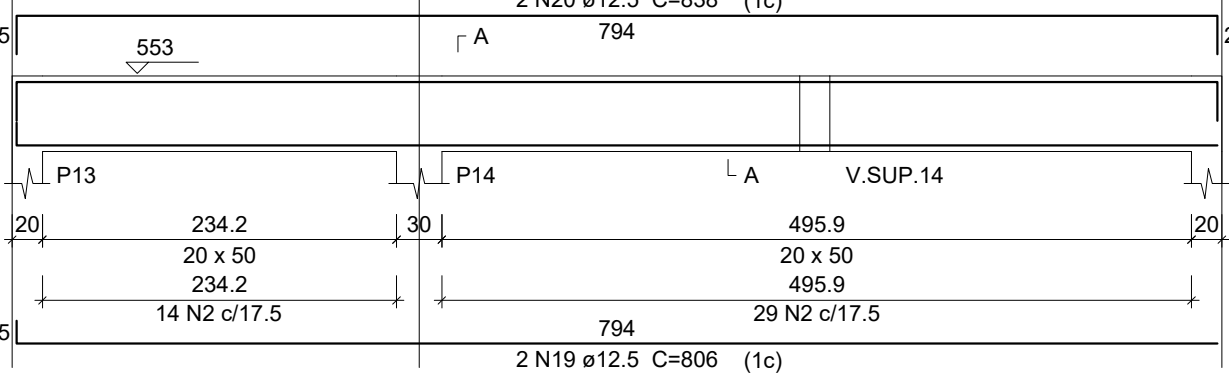
SEÇÃO A-A

ESC 1:25



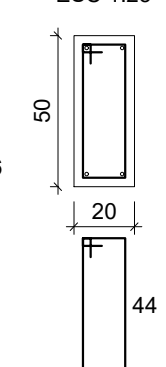
V.SUP.4

ESC 1:50



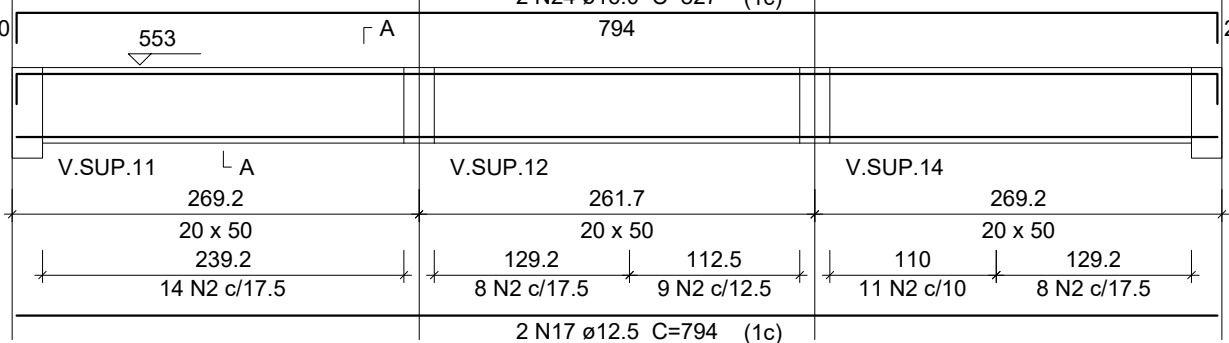
SEÇÃO A-A

ESC 1:25



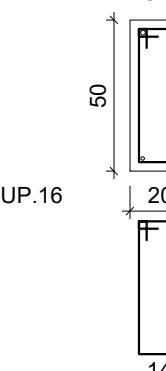
V.SUP.7

ESC 1:50



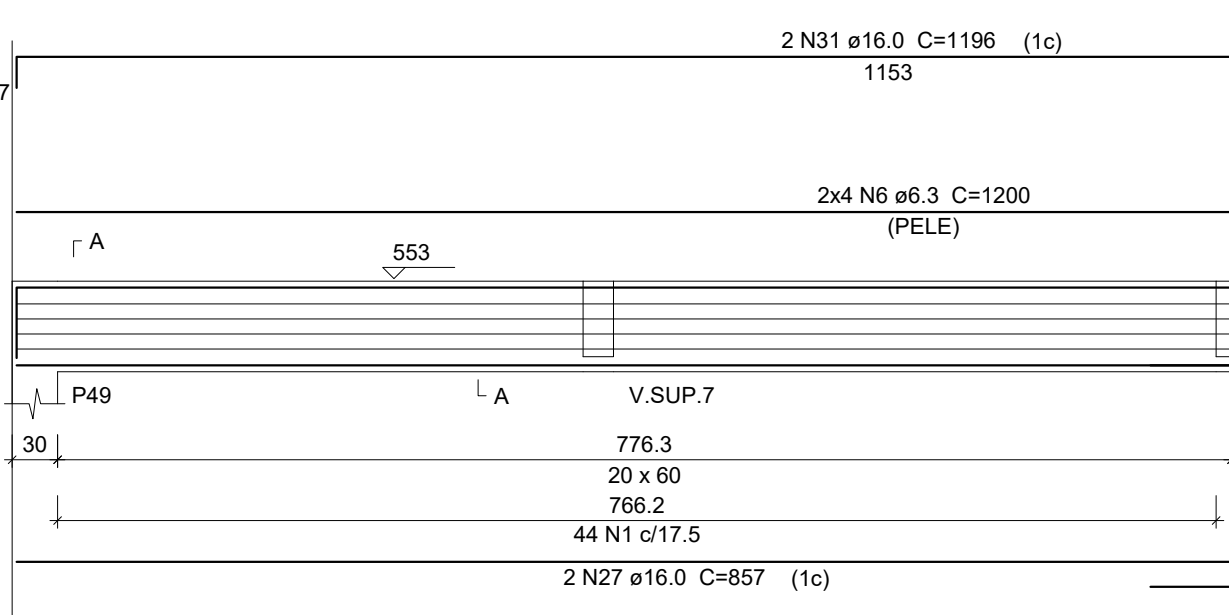
SEÇÃO A-A

ESC 1:25



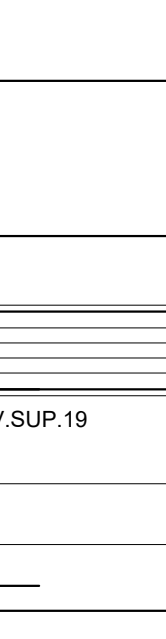
V.SUP.11

ESC 1:50



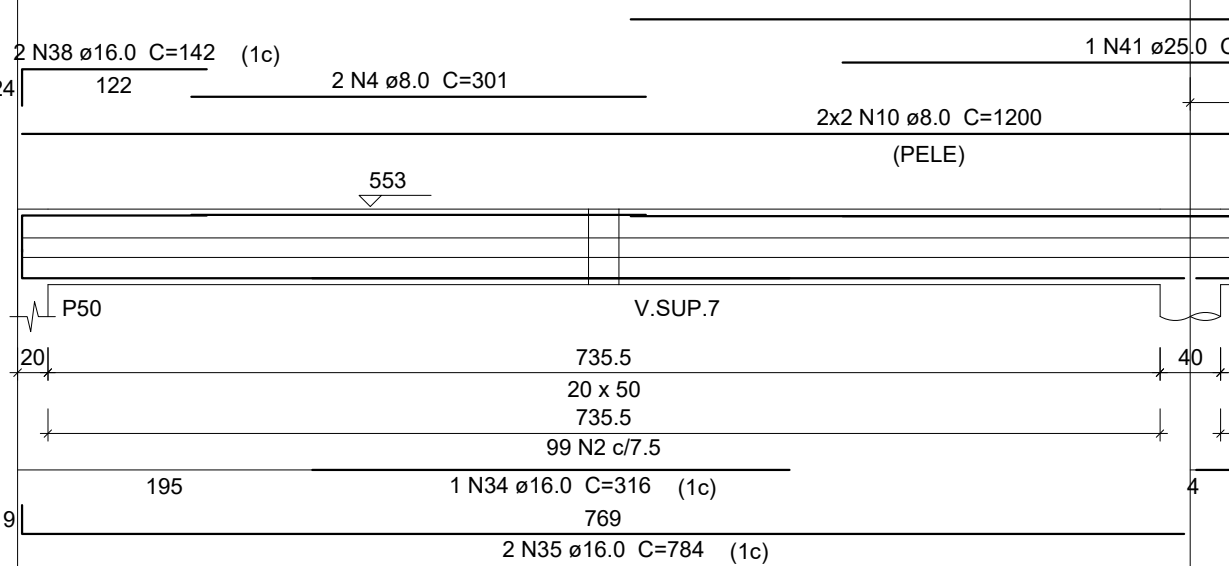
SEÇÃO A-A

ESC 1:25



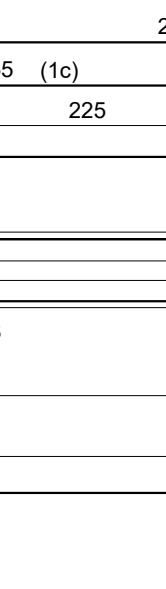
V.SUP.12

ESC 1:50



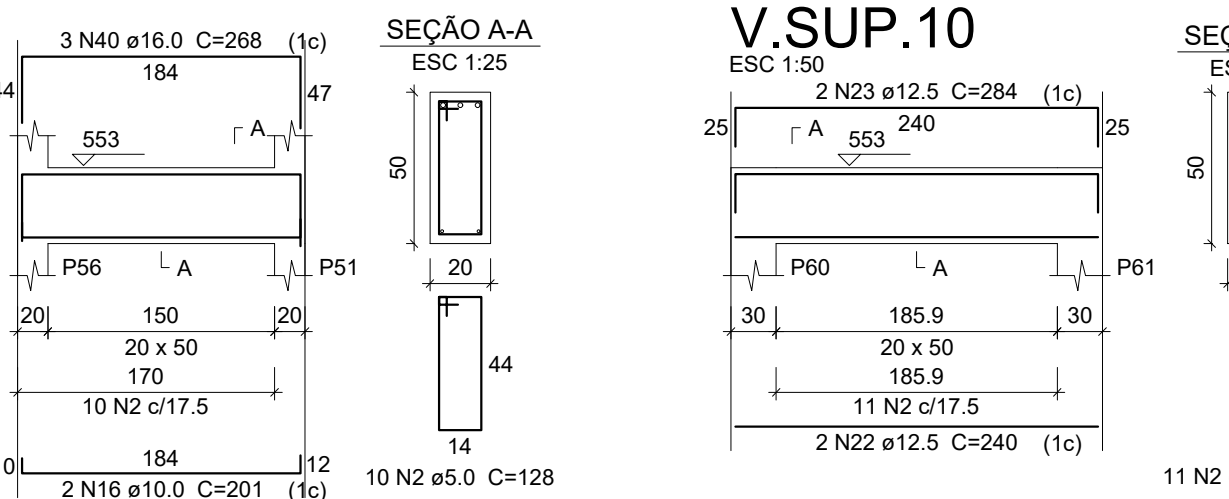
SEÇÃO A-A

ESC 1:25



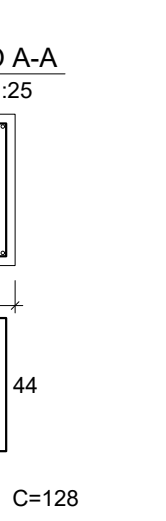
V.SUP.13

ESC 1:50



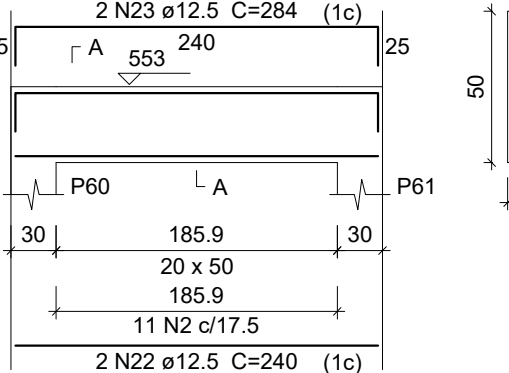
SEÇÃO A-A

ESC 1:25



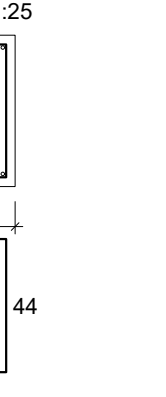
V.SUP.10

ESC 1:50



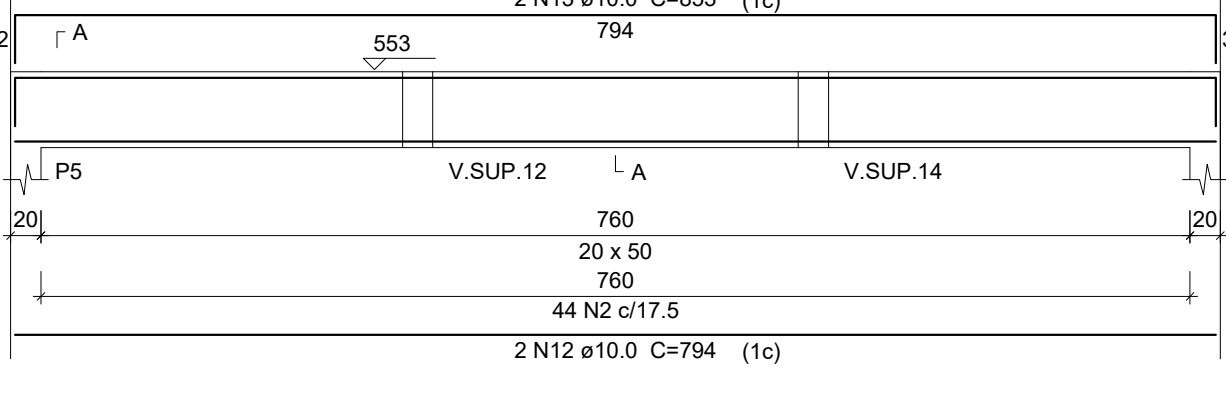
SEÇÃO A-A

ESC 1:25



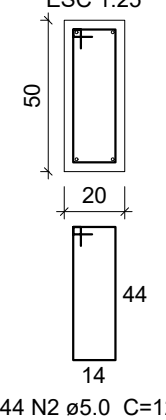
V.SUP.2

ESC 1:50



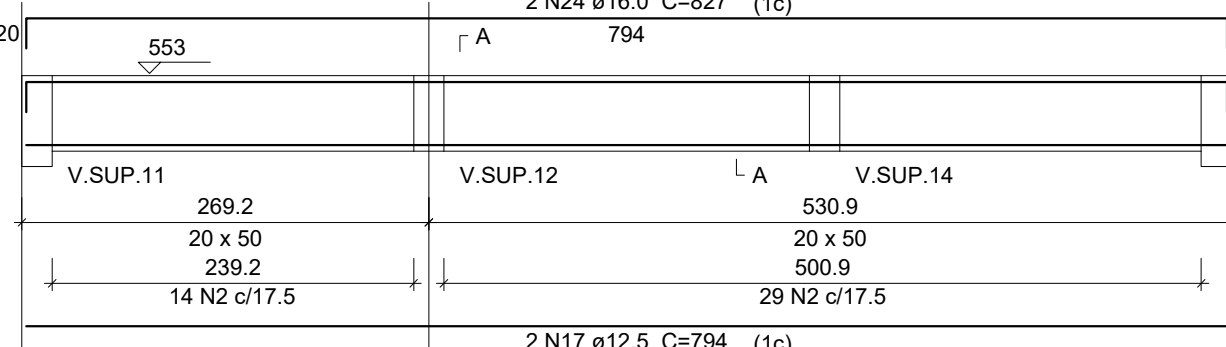
SEÇÃO A-A

ESC 1:25



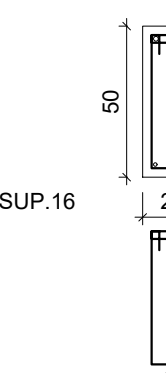
V.SUP.5

ESC 1:50



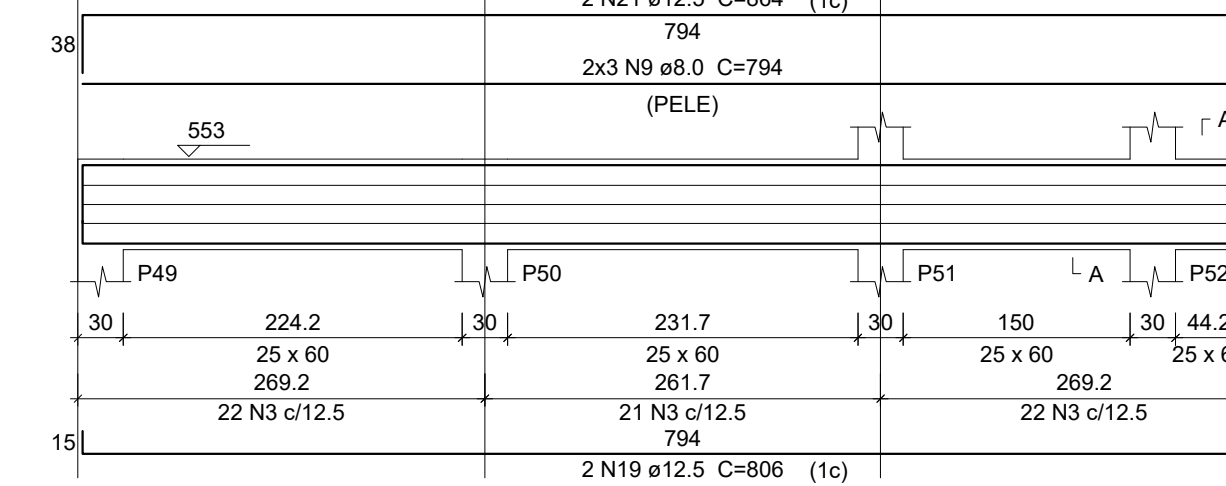
SEÇÃO A-A

ESC 1:25



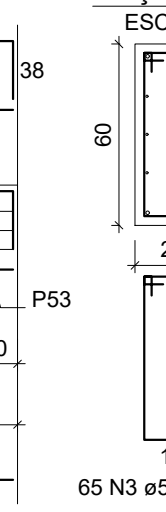
V.SUP.8

ESC 1:50



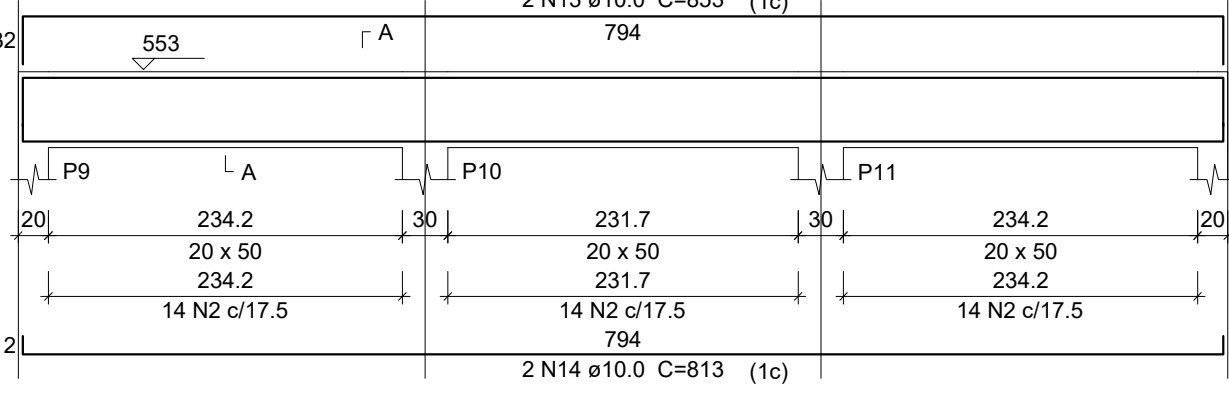
SEÇÃO A-A

ESC 1:25



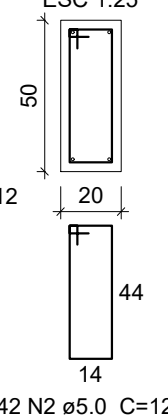
V.SUP.3

ESC 1:50



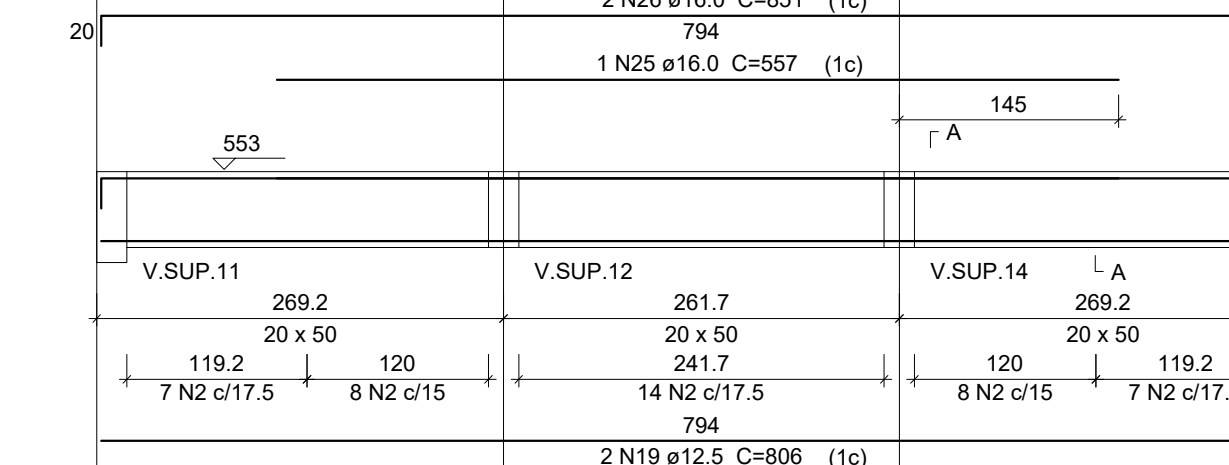
SEÇÃO A-A

ESC 1:25



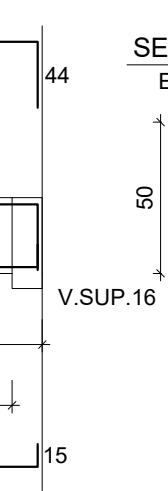
V.SUP.6

ESC 1:50



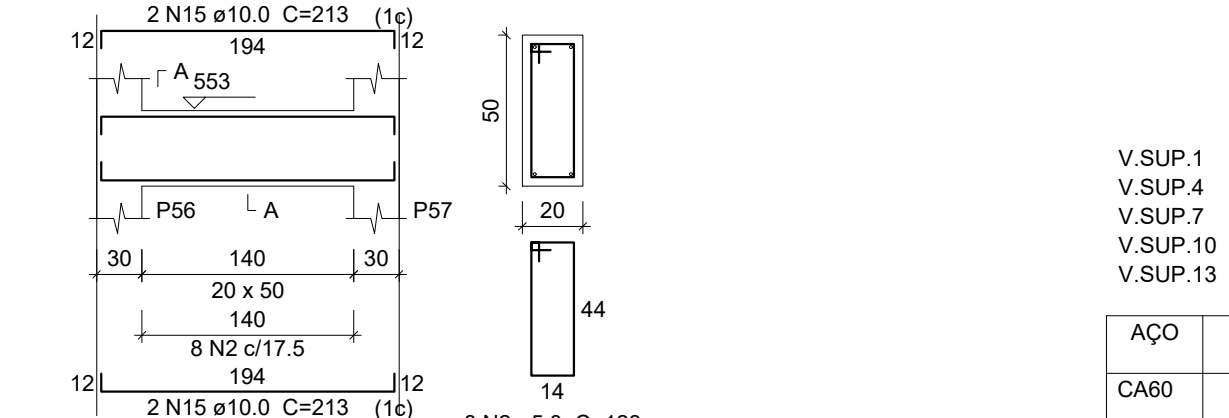
SEÇÃO A-A

ESC 1:25



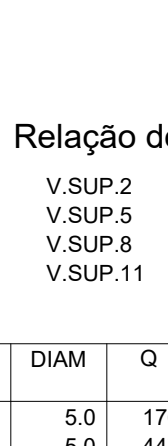
V.SUP.9

ESC 1:50



SEÇÃO A-A

ESC 1:25



Relação do aço

ACO	N	DIAM	Q	UNIT (cm)	C.TOTAL (cm)
CA60	1	5.0	176	148	26048
	2	5.0	447	128	57216
	3	5.0	65	158	10270
	4	5.0	2	301	502
CA50	5	6.3	8	794	6352
	6	6.3	16	1200	19200
	7	6.3	8	230	1840
	8	6.3	158	128	20224
	9	8.0	6	794	4764
	10	8.0	8	1200	9600
	11	8.0	4	252	1008
	12	10.0	2	794	1588
	13	10.0	4	853	3412
	14	10.0	2	813	1626
	15	10.0	4	213	852
	16	10.0	2	201	402
	17	12.5	6	794	4764
	18	12.5	2	650	1700
	19	12.5	6	806	4836
	20	12.5	2	838	1676
	21	12.5	2	864	1728
	22	12.5	2	240	480
	23	12.5	2	284	568
	24	16.0	4	827	3308
	25	16.0	1	557	557
	26	16.0	2	851	1702
	27	16.0	2	857	1714
	28	16.0	2	812	1624
	29	16.0	2	959	1918
	30	16.0	2	340	680
	31	16.0	2	1196	2392
	32	16.0	2	1200	2400
	33	16.0	2	405	810
	34	16.0	1	316	316
	35	16.0	2	784	1568
	36	16.0	4	818	3272
	37	16.0	2	961	1922
	38	16.0	2	142	284
	39	16.0	2	711	1422
	40	16.0	3	268	804
	41	25.0	1	455	455
	42	25.0	2	1200	2400
	43	25.0	2	420	840

Resumo do aço

ACO	DIAM	C.TOTAL (m)	PESO + 10 % (kg)
CA50	6.3	476.2	128.2
	8.0	153.8	66.7
	10.0	78.8	53.4
	12.5	157.6	166.9
	16.0	267	463.4
	25.0	37	156.6
CA60	5.0	941.4	159.6
PESO TOTAL			
CA50	1035.3		
CA60	159.6		

Vol. de concreto total (C-30) = 13.21 m³
Área de forma total = 154.33 m²

Nº	DESCRIÇÃO	DATA	EMITENTE	VERIFICAÇÃO	APROVAÇÃO	CÓDIGO	OBJETO
REVISÕES							
DOCUMENTOS DE REFERÊNCIA							

AUTORIA		EXCELÊNCIA SOLUÇÕES EM ENGENHARIA	
PROJETISTA		Tel. (47) 3018-1774 / (47) 9 9965-1688	
DESENHISTA	Eng. Vandetei Cardoso Engenheirovc@gmail.com	DATA	01/09/2021
VERIFICAÇÃO	Eng. Vandetei Cardoso Engenheirovc@gmail.com		
RESP.TÉCNICO	Eng. Vandetei Cardoso Engenheirovc@gmail.com	CREA: SC 108762-6	

VERIFICAÇÃO	
APROVAÇÃO	

ESTRADA		TRECHO	
BR-282 RANCHO QUEIMADO/SC		BR-282	

CLIENTE		RESPONSÁVEL TÉCNICO	
PREFEITURA DE RANCHO QUEIMADO		Eng. Vandetei Cardoso CREA: SC 108762-6	
OBRA			
MIRANTE RANCHO QUEIMADO			
ASSUNTO		FOLHA	
PROJETO ARMAÇÃO ESTRUTURA ENTRADA		13	
NOME DO ARQUIVO			
PMRQ003.IBR.EST.PE.0013.ARM.R00			